



AVK DOUBLE ECCENTRIC BUTTERFLY VALVE, PN10

756/122-242

Stainless steel seat, actuator flange, IP68 gearbox w. position indicator and handwheel, plate disc, long, DN350-600

AVK double eccentric butterfly valves are designed with tilted and fixated disc for extended service life and easy operation. The disc seal is made of AVK's drinking water approved EPDM rubber featuring an excellent compression set and thus ability to regain its original shape. The GSK approved epoxy coating and the corrosion protected shaft end zones ensure high durability. The valves are suitable for bi-directional application.

Product description:

Double eccentric butterfly valve to EN 593 with stainless steel seat and IP68 gearbox with actuator flange and handwheel; for drinking water and neutral liquids to max. 70°C

Standards:

- Designed according to EN 593
- Face-to-face dimension according to EN 558 Table 2 Basic Series 14
- Standard flange drilling to EN1092-2 (ISO 7005-2), PN10/16

Test/Approvals:

- Approved according to KIWA Certificate K 6320
- Approved according to WRAS Certificate No. 2206003
- Hydraulic test according to EN 1074-1 and 2 / EN 12266

Features:

- The tilted disc releases the compression of the disc sealing after a few degrees of opening, which extends the durability and gives low operating torques
- The disc is fixated to prevent wear and fluttering
- The disc seal profile and rubber quality ensure low closing torques
- All rubber parts are multi approved
- Seal retainer ring of stainless steel
- The threaded bolt holes in the disc are corrosion protected with O-rings
- Replaceable seat ring of stainless steel pressed into the body and sealed with an O-ring
- Shaft of stainless steel with self-lubricating bearings
- The shaft ends are corrosion protected with a stainless steel security plate and a gasket
- Replaceable shaft sealing with an EPDM O-ring on a stainless steel ring, a back-up EPDM O-ring in the housing, and a flat NBR gasket
- Body and disc of ductile iron with fusion bonded epoxy coating in compliance with DIN 3476 part 1 and EN 14901, GSK approved, RAL 5017, according to WRAS-DVGW/W270/UBA

Accessories:

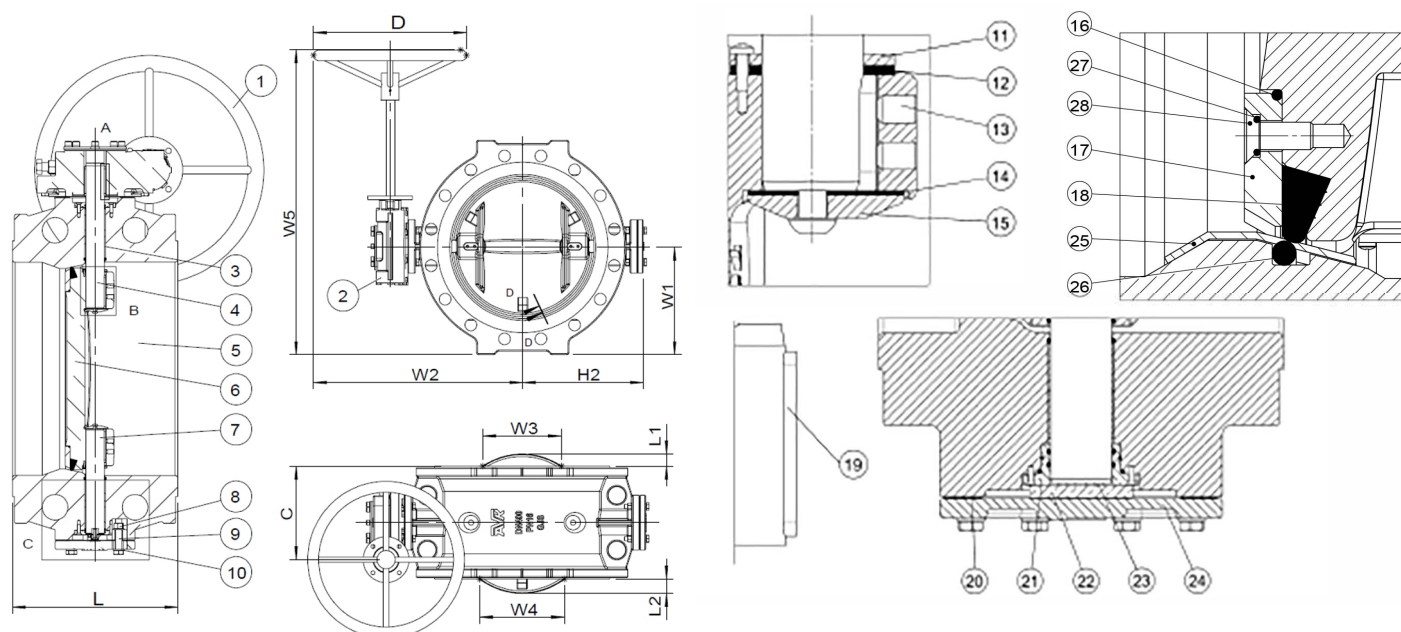
Electric actuator, extension spindle, street cover, dismantling joint and flange adaptor



kiwa

Expect... **AVK**

The designs, materials and specifications shown are subject to change without notice. This is due to the continuous development of our product programme.

AVK DOUBLE ECCENTRIC BUTTERFLY VALVE, PN10**756/122-242****Stainless steel seat, actuator flange, IP68 gearbox w. position indicator and handwheel, plate disc, long, DN350-600****Component list:**

1. Handwheel	Steel	15. End cover	Stainless steel
2. Gearbox	Cast iron	16. O-ring	EPDM rubber
3. Radial bearing	Bronze / PTFE composite	17. Retainer ring	Stainless steel 1.4401 (316)
4. Drive shaft	Stainless steel 1.4057 (431)	18. Seal ring	EPDM rubber
5. Body	Ductile iron GJS-500-7 (GGG-50)	19. Key	Stainless steel A4
6. Disc	Ductile iron GJS-500-7 (GGG-50)	20. Gasket	EPDM rubber
7. Stub shaft	Stainless steel 1.4057 (431)	21. Seal housing	Bronze
8. Nut	Stainless steel A4	22. Thrust bearing	Bronze
9. Bolt	Stainless steel A4	23. Set screw	Stainless steel A4
10. Washer	Stainless steel A4	24. End plate	Ductile iron GJS-500-7 (GGG-50)
11. End cover	Stainless steel 1.4057 (431)	25. Seat ring	Stainless steel 1.4401 (316)
12. Gasket	EPDM rubber	26. O-ring	EPDM rubber
13. Set screw	Stainless steel A4	27. O-ring	EPDM rubber
14. Gasket	EPDM rubber	28. Screw	Stainless steel A4

Components may be substituted with equivalent or higher class materials without prior notification.

Reference nos. and dimensions:

AVK ref. no.	DN	Flange	L	L1	L2	H2	W1	W2	W3	W4	W5	C	D	Actuator	Theoretical
	mm	drilling	mm	mm	mm	mm	mm	mm	mm	mm	mm	mm	mm	Flange	weight/ka
756-0350-1-04022013	350	PN10	290	20	26	318	272	369	151	173	276	237	300	F10	128
756-0400-1-04022013	400	PN10	310	35	41	349	302	571	215	232	850	257	400	F10	169
756-0500-1-04022013	500	PN10	350	63	69	418	338	668	322	335	886	277	400	F10	206
756-0600-1-04022013	600	PN10	390	94	100	481	393	810	426	437	977	331	500	F14	318

The designs, materials and specifications shown are subject to change without notice. This is due to the continuous development of our product programme.